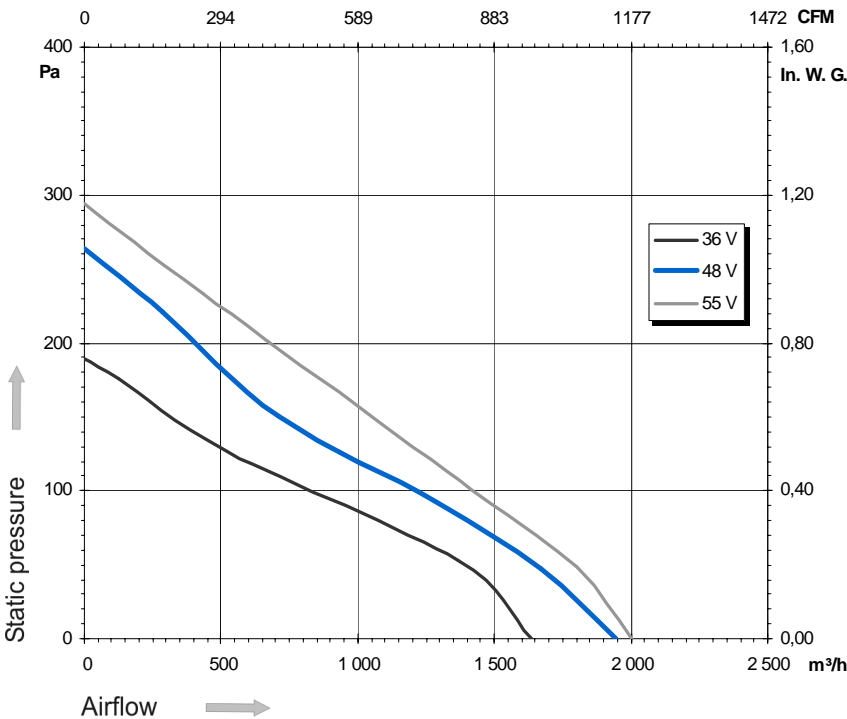
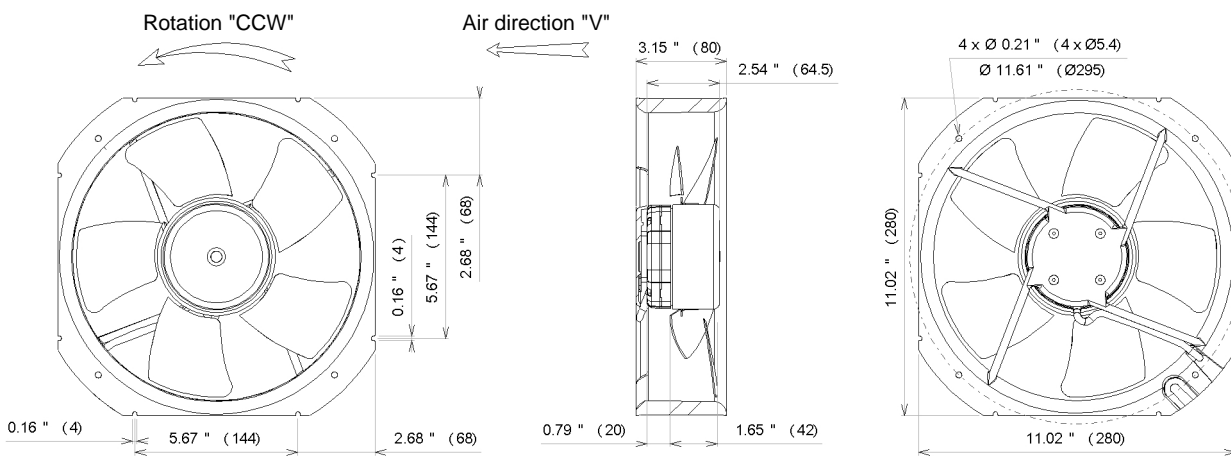
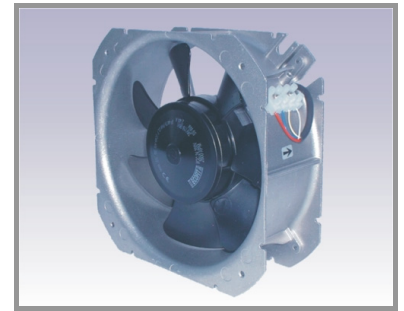


Ind. e - Revision : 04-2008

## VGC48 250V P/N D40-A3

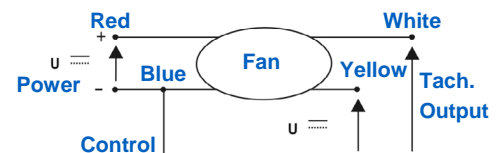
Voltage	Input power	Current	Airflow	Speed rotation	Noise level	Rotation direction	Operating temperature
V	Wa	A	m <sup>3</sup> /h	RPM	dBA	↻	Min / Max
48	111	2,32	1 945	3 080	70	L	-20°C / +70°C
48			1144 CFM				-4°F / +158°F



- Weight : 2,3 Kg
- Nominal voltage 48VDC (36-55VDC)
- Reverse polarity protection
- Soft start
- Locked rotor protection
- Tachometer output (open collector)
- Controlled by 0-10VDC or PWM signal
- IP44 protection
- Aluminium ring
- G6.3 balancing
- Connexion block fixed on ring

Finger guard

21369



Non contractual document. All specifications are subject to change without prior notice. Picture for information only.